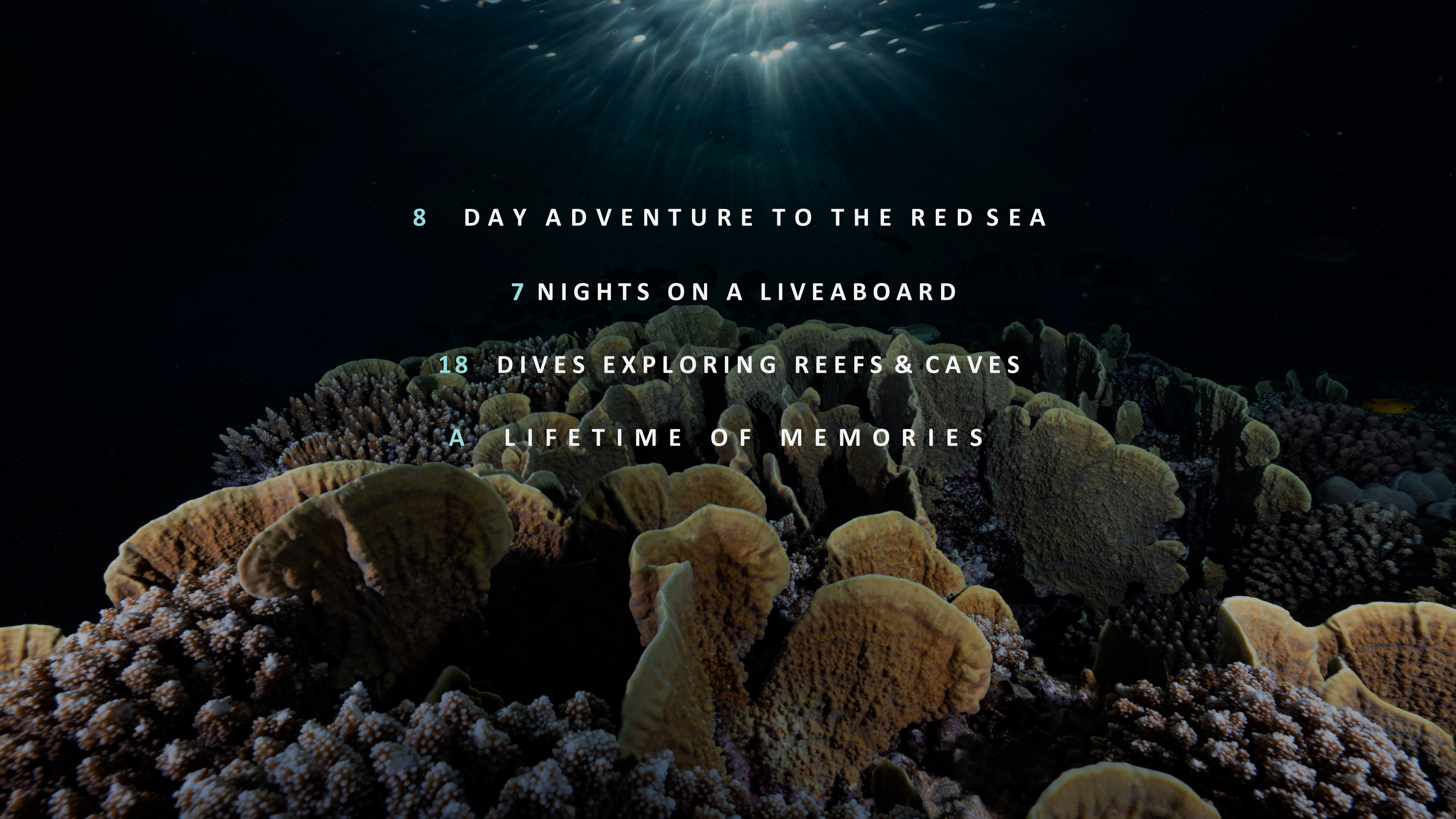




RED SEA – EGYPT  
Sharks & Dreams

05.-12. JUNE 2025 (Port Ghalib – Port Ghalib)

CARLU DIVE  
TRAVEL



8 DAY ADVENTURE TO THE RED SEA

7 NIGHTS ON A LIVEBOARD

18 DIVES EXPLORING REEFS & CAVES

A LIFETIME OF MEMORIES

# Introduction

**Egypt** is located on the northeast corner of the African continent. It is bordered by Libya to the west, Sudan to the south, the **Red Sea** to the east, and the **Mediterranean Sea** to the north.

Egypt stays **mild-to-hot** for most of the year, with temperatures often hitting around 34°C (92°F) in summer and 18°C (65°F) in winter. March and April can be very windy, which may cause sandstorms.

The owners of Carlu Travel have been working in Egypt and the Red Sea since many years. Their favorite time to go diving in the Red Sea is between **June** and **July**. That's when they experience the best dive conditions and the most dolphin encounters.

There are **over 1000 species of fish** in the Red Sea, 20 percent of which are found nowhere else in the world. With it being one of the sunniest places on the planet, corals and their tiny guests thrive on an overabundance of solar energy.



*Red Sea  
Sharks & Dreams 2025*

# Introduction

This diving route offers great possibilities for divers with a little more experience. On some dives we will be exposed to stronger currents that's why you should have at least **30 logged dives**.

The itinerary offers a great mix of **deep wall dives**, **blue water dives** and also **cave dives**. The south of the Red Sea is very enjoyable for those, who want to look for **pelagic sharks** and simply dive near **wonderful reefs**. It presents an environment of great beauty and high diversity.

At the famous **Daedalus Reef** we will look out for hammerhead sharks, occasionally you can spot silky sharks and oceanic mantas.

**Sataya** offers the opportunity to swim with spinner dolphins. Another highlight are the light flooded caves of **Claudia** and **Malahi**. More pelagics awaits us at **Elphinstone**. And **Marsa Shouna** is truly a Turtel-Paradise!

And you also get our '**No Hidden Extras**' guarantee as all marine park fees and port departure fees are included in our price.



*Red Sea  
Sharks & Dreams 2025*

# ITINERARY

## Day 1

6:00pm transfer from Hurghada Airport or your hotel to our liveaboard in Marsa Alam (3h transfer). Check In and dive gear set up.

## Day 2

Let's go DIVING!  
2-3 Dives around Port Ghalib.  
First dive is a check dive. Possibility for a night dive.

## Day 3

3 dives at Daedalus. We are looking for hammerheads, oceanic mantas and more sharks.

## Day 4

3 dives at Daedalus. We continue our search for pelagics that inhabit this reef.

## Day 5

In the morning we will swim with spinner dolphins in the Sataya Lagoon. 1 dive in Malahi. 1 dive in Claudia. Possibility of night diving or visiting an island.

# ITINERARY

Day 6

3 dives at Elphinstone.  
Optional night dive.

Day 7

3 dives around Port  
Ghalib like Marsa  
Shouna, Abu Dabab.

Day 8

Check Out.  
9:30 am transfer to  
Airport or your hotel.

From here you  
decide what you  
want to do 😊

## DAY 1

Arrival at Hurghada Airport (HRG). One of the staff members will be waiting for you at the airport if you arrive around 5:00pm. At 6:00 pm the free transfer will take you (from the airport or hotel) on a 3-hour journey by land to **Port Ghalib**, bringing you to the **EMPEROR ELITE**. Upon arrival we will Check In, do a briefing of the boat, diving and plan the itinerary. Dinner on board.

## DAY 2-7

The planned route (condition depending) will take a trip around **Abu Dabab, Daedalus, Fury Shoal, Sataya, Malahi, Claudia, Elphinstone**. While onboard, you will experience a 18-dive program that includes day and night dives. There is also optional snorkeling.

## DAY 8

Check out at 9:30 am. Our free transfer will bring you back to Hurghada Airport (HRG) or a hotel of your choice. If the return flight leaves in the afternoon there is a day hotel option near the airport, and even free time to optionally visit Hurghada until the time of the return flight.





# ANIMALS You'll SEE

You already know that nothing is certain in the ocean. At the same time, everything can happen.





Napoleon Fish



Spinner Dolphins

Trevally



Oceanic Manta Ray



Turtle

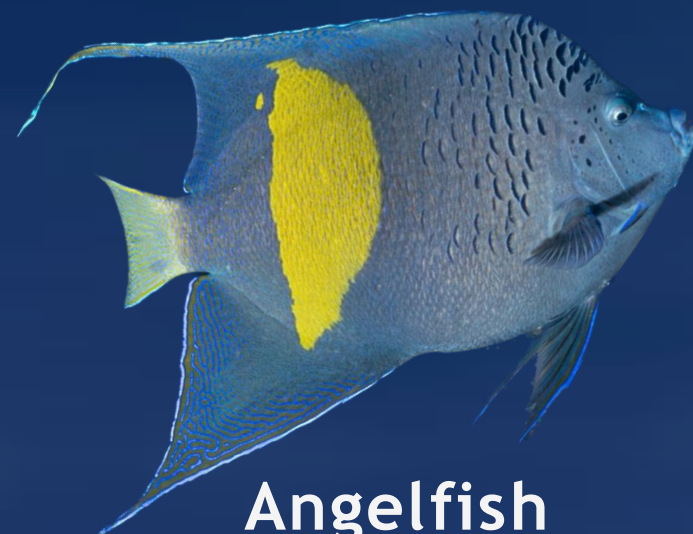
Bluespotted Stingray



Batfish



Angelfish



Lionfish





Oceanic Whitetip Shark



Silky Shark



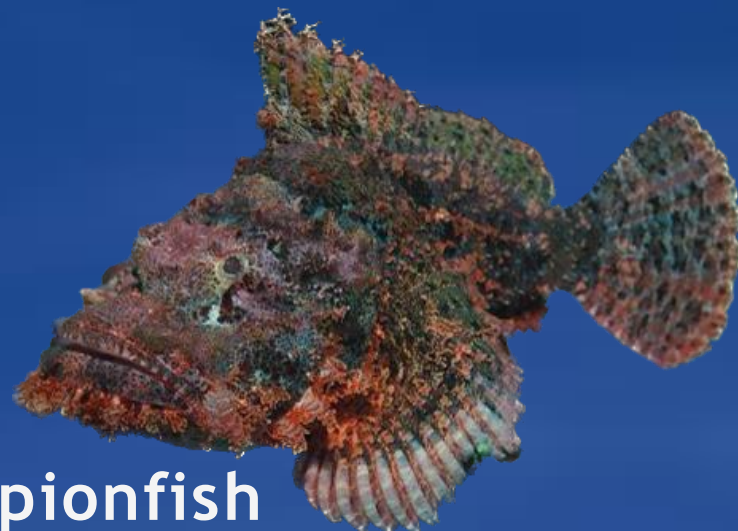
Hammerhead Shark



Tresher Shark



Anemone Fish



Scorpionfish



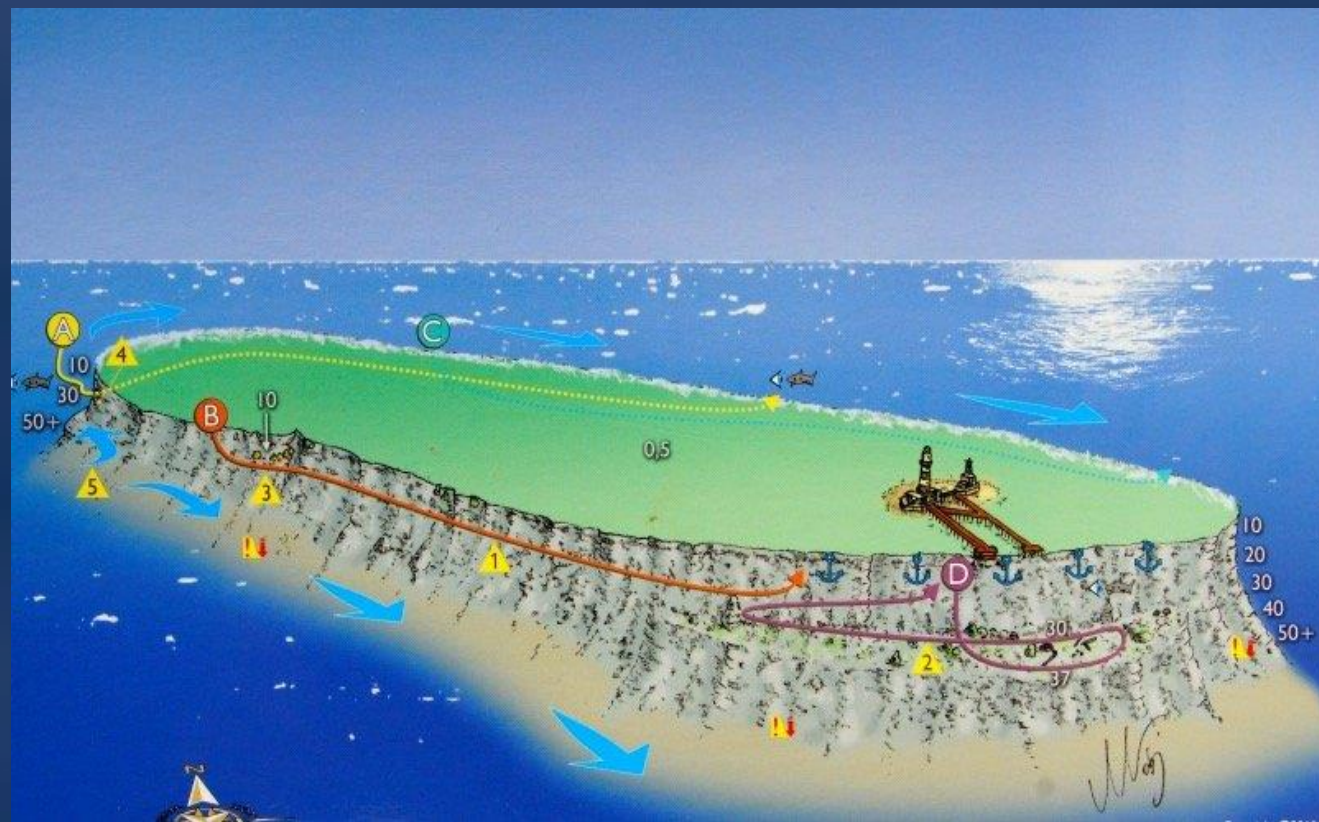
Giant Moray



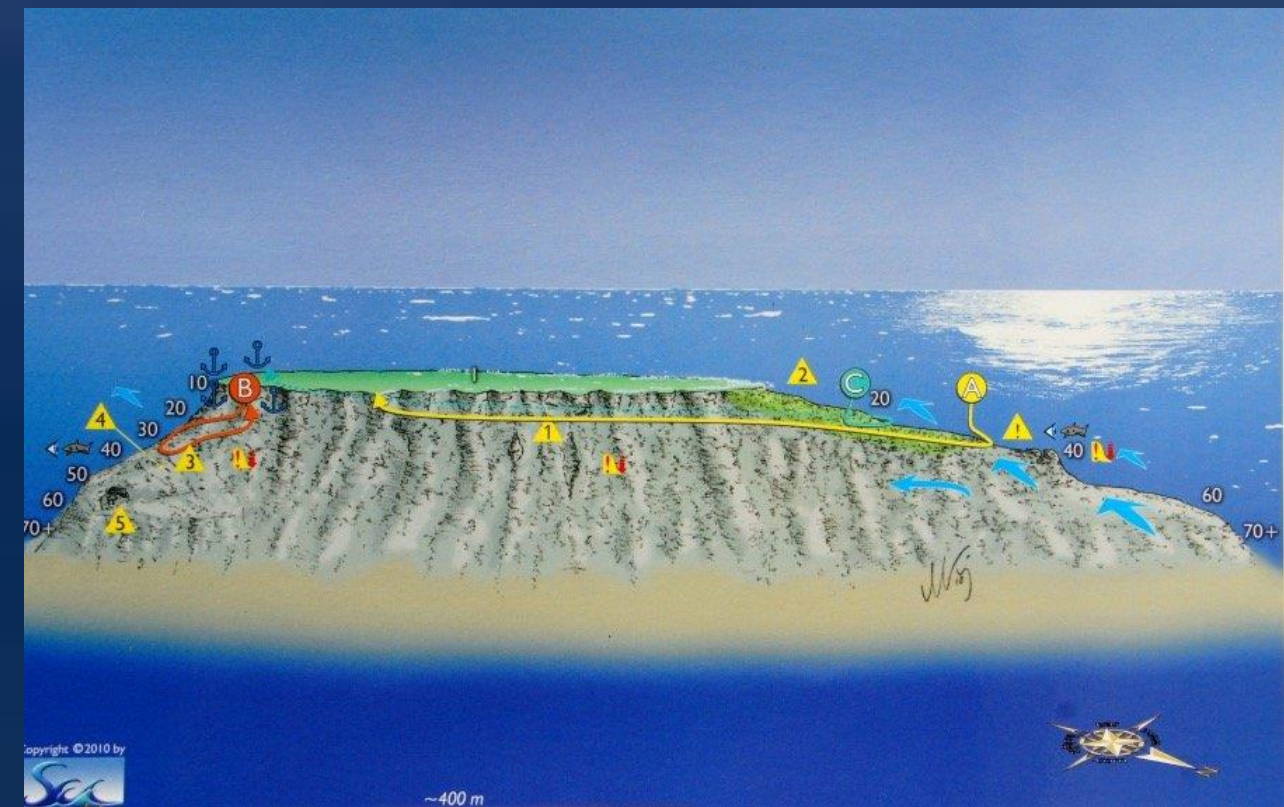
Moray Eel

# D I V E S I T E S

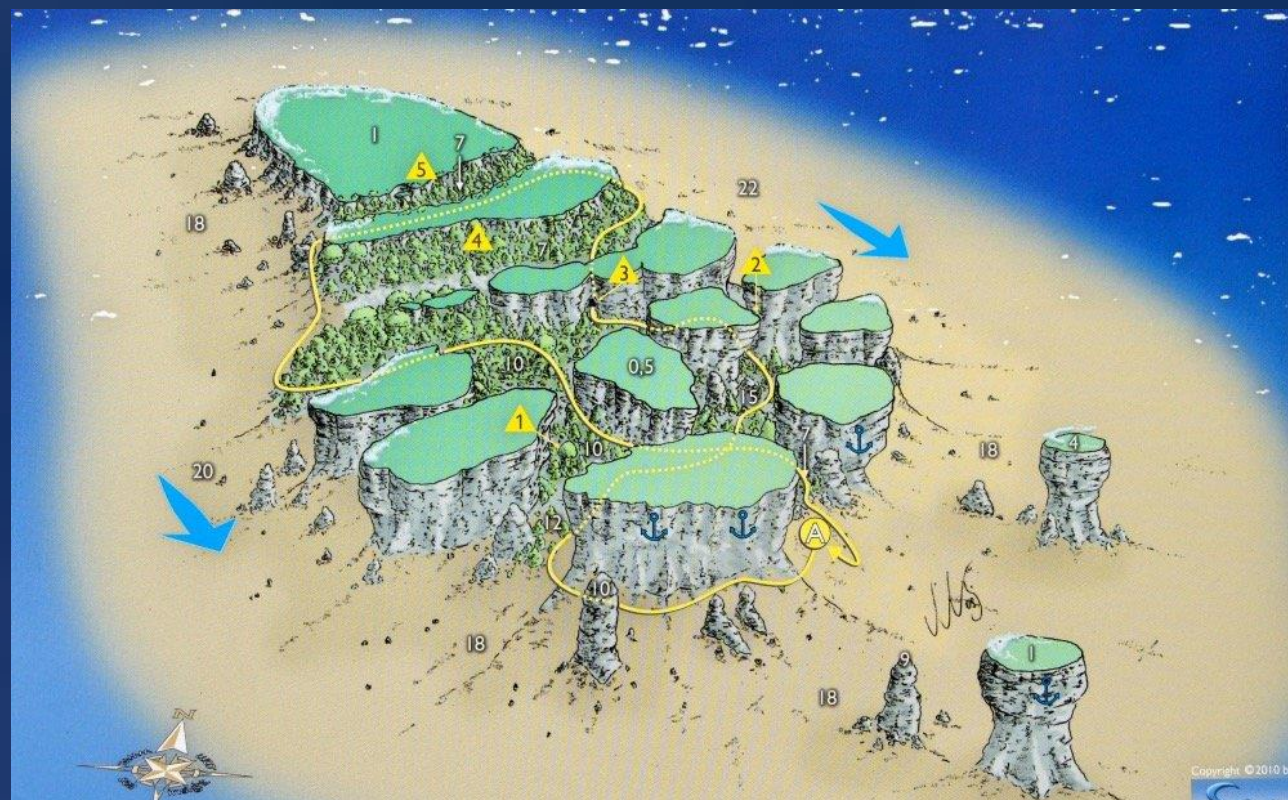




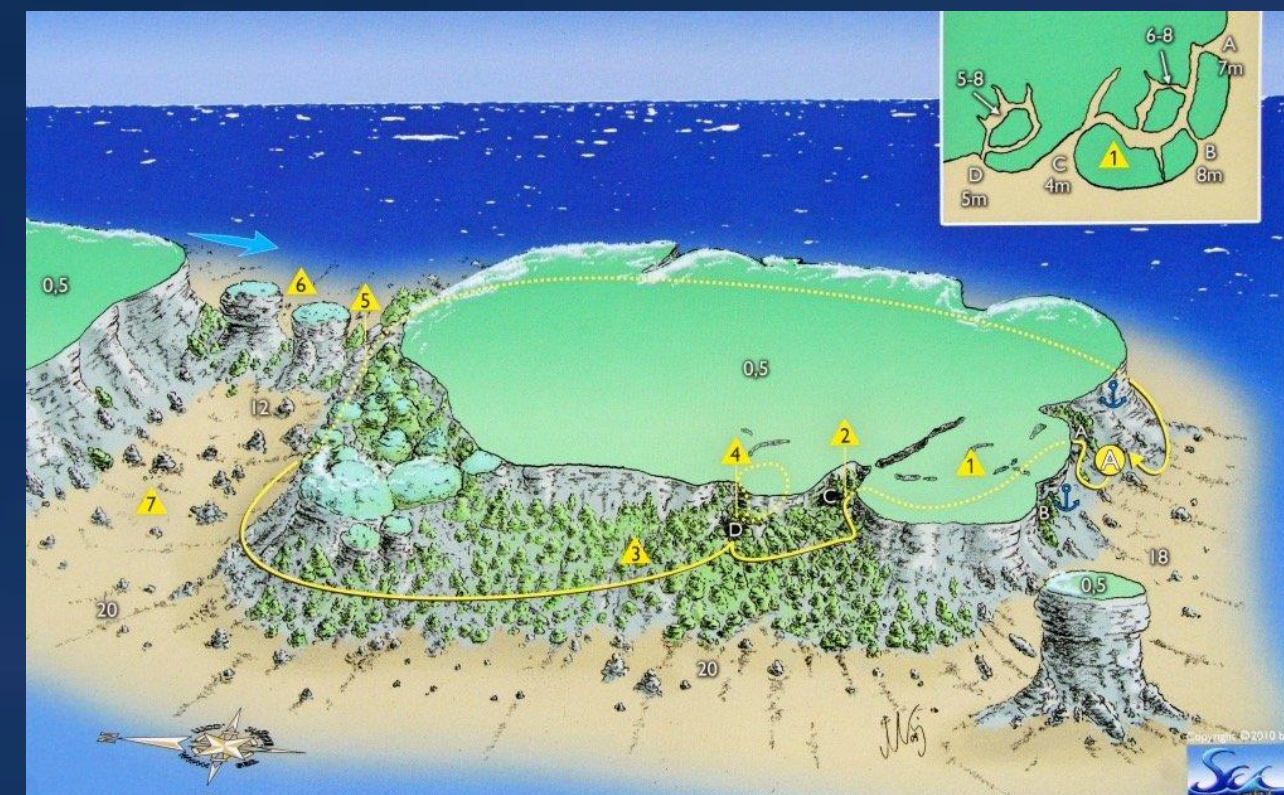
DAEDALUS



ELPHINSTONE



MALAH I



CLAUDIA

# EMPEROR ELITE LIVEABOARD



# EMPEROR ELITE BOAT FACILITY

- Main deck: Partitioned air-conditioned lounge and dining room with comfy sofas, 55" LCD Smart TV, locally stocked bar offering beer and wine. Dive deck and dive platform.

- Upper deck: Sun deck with sofas and tables, locally stocked bar and premium coffee bar offering espresso, latte and cappuccino

- Sun deck: Deckchairs, sunbeds, bean bags

- WiFi: Complimentary and limited-data package for single device. Additional codes available on board. Please read terms of use.



# EMPEROR ELITE DIVING FACILITY



- 2 dive guides
- Dive deck: Spacious dive deck and 6.5m x 8m platform. 3 x Bauer compressors under deck
- Diving tender: 2 x Zodiac 40 HP
- Dive equipment rental: Full range on offer; must be arranged before arrival in resort. All divers are required to use a dive computer and SMB for every dive and a torch each for night dives.
- Dive tanks: Equipped with 12-litre Aluminium tanks as standard and 15-litre Steel tanks on request. FREE Nitrox; up to 40% plus partial pressure system and filling equipment for Tech purposes
- PADI courses available: Skills Review, Advanced Open Water, Adventure Dives and Specialties
- Technical, re-breather and side mount diving; on request
- Medical: Oxygen, comprehensive First Aid and AED available
- Camera facilities: Charging stations, air gun, rinse tanks and camera table



# EMPEROR ELITE LOWER DECK TWIN

1.400€



Lower deck twin cabins are approx. 10sqm with port holes, twin beds and individually controlled air con. Ensuite bathroom with shower and 2 cabin towels per guest. Hairdryers available, on request.





# EMPEROR ELITE MIDDLE/UPPER DECK TWIN

1.500€



Main deck twin cabin is approx. 12sqm with a large window. Upper deck twin cabins are approx. 9sqm with large windows, twin beds which can be converted to a double bed on request and individually controlled air con. Ensuite bathroom with shower and 2 cabin towels per guest. Hairdryers available, on request.

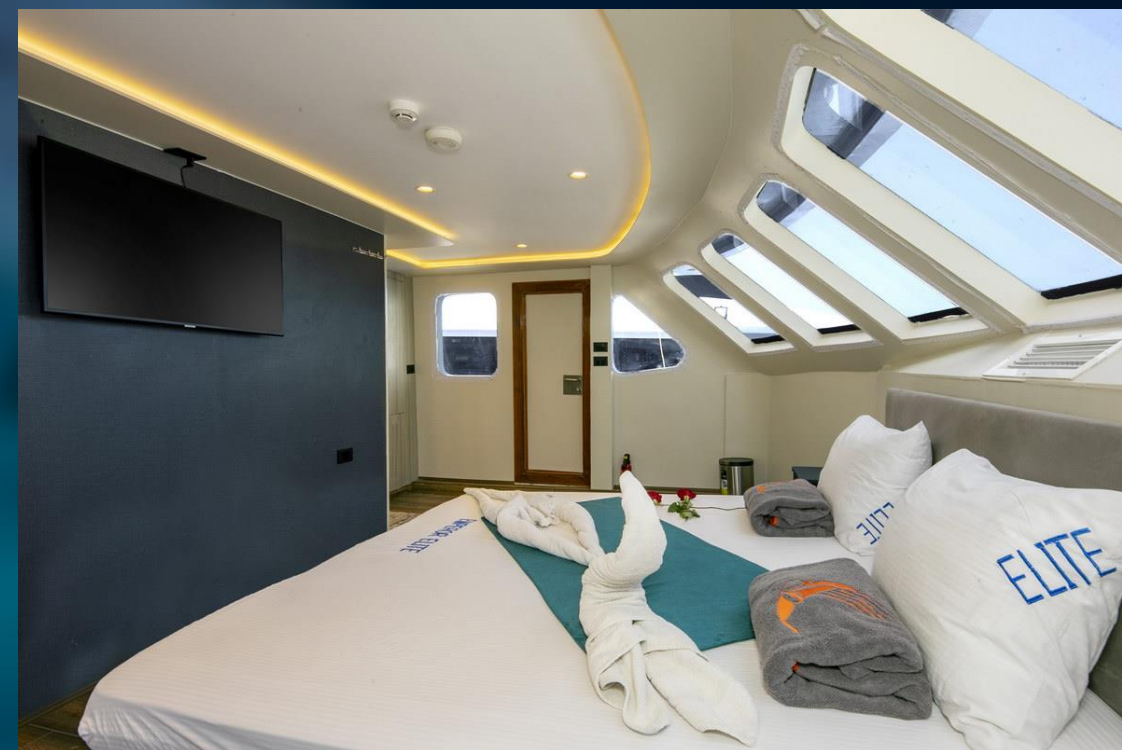


# EMPEROR ELITE UPPER DECK JUNIOR SUIT

1.635€



Junior Suite is located on the upper deck and measures approx. 19sqm with panoramic windows, king-sized double bed, a sofa that converts into a full-size single bed, individually controlled air con, and a 32" flat screen TV (USB connection). Ensuite bathroom with separate shower room. 2 cabin towels per guest. Hairdryers available, on request.



# EMPEROR ELITE UPPER DECK EXECUTIVE SUIT

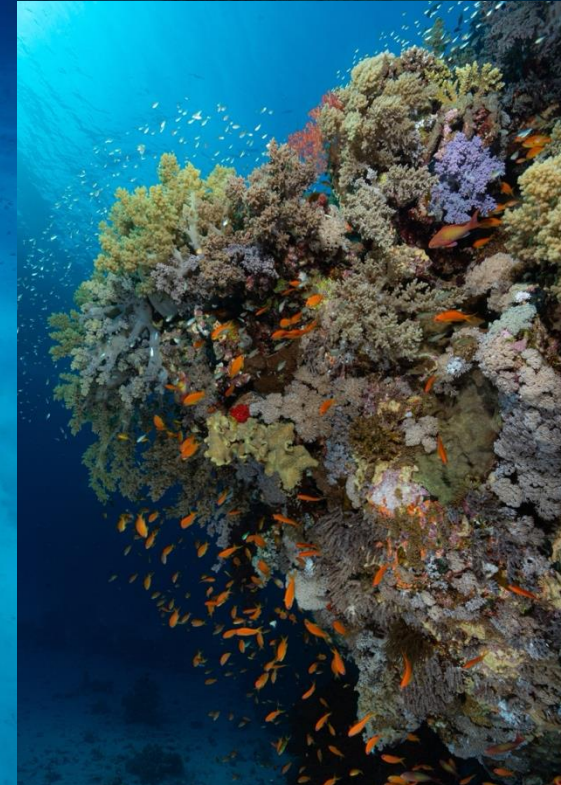
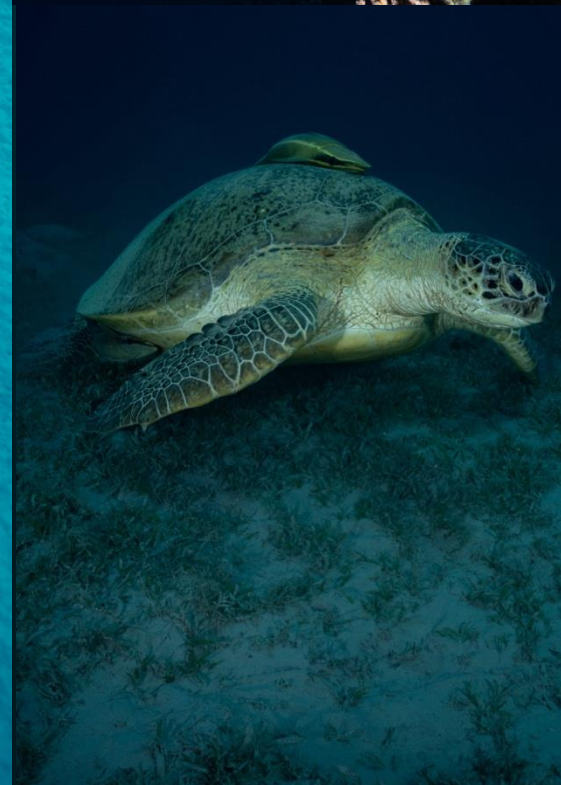
1.900€



Executive Suite is located on the upper deck and measures approx. 28sqm with large windows, king-sized double bed, 2 sofas (1 converts to a full-size single bed), dual air con, flat screen smart TV (USB connection) and an exclusive WiFi router on the writing desk. Ensuite bathroom with separate shower room and dressing table. 2 cabin towels per guest. Hairdryers available, on request.



# UW FOTOS FROM OUR TRIP





MORE INFO



## Currency

The national currency of Egypt is Egyptian Pound (EGP), known as geneih, but you can easily pay with US-Dollar (USD) and Euros (EUR). Visa and Mastercard are also widely accepted.

## Visa on Arrival

You do not need to apply for a visa prior to traveling. Visitors of all nationalities can get a 30 day visa for \$25 USD upon arrival at the airport in Egypt.

We will contact you if there are changes to required immigration documentation.

# Airport

## Arriving and Departing Hurghada Int'l Airport (HRG)

There are 30 airlines with flights from Hurghada: Aeroflot, Air Cairo, Airbus Transport International, AlMasria, AZUR air, Brussels Airlines, Condor, Corendon Dutch Airlines, easyJet, Edelweiss Air, EgyptAir, Eurowings, FlyEgypt, Flynas, Germania, Luxair, Pegasus, Red Wings, SmartWings, SWISS, Swissair, Transavia, Transavia France, TUI, TUI Airlines Belgium, TUIfly, TUIfly Netherlands, Turkish Airlines, Wizz Air and Wizz Air UK.

If you need advice, we are happy to help!

# Climate



We recommend 3-5 mm wetsuits because the average water temperatures are: 23 - 28 C (74 - 82F)



## Electricity

In Egypt the power plug sockets are of type C and F. The standard voltage is 220 V and the frequency is 50 Hz. Egypt uses the same adapter plug that is used in many parts of Continental Europe.

If you will be traveling to bordering countries Libya or Sudan, additional adapters will be required. Adapter plugs allow electrical connections up to 240 volts.

If you need advice, we are happy to help!

## Clothing

Light fabrics like linen, cotton and athletic gear made to take the heat are best. There are no dress requirements aboard, however, when on land modest clothing and covered shoulders are recommended.



## Egyptian Law



In Egypt, individuals need to dress modestly in rural areas, mosques, and souqs (markets).

Public displays of affection, such as kissing, are frowned upon in Egypt and what may be acceptable in the tourist resort areas may be frowned upon in others. Holding hands is generally fine, but there are locations in Egypt where this is looked down upon, as physical contact between a man and woman is considered inappropriate.

Drinking alcohol in the street and anywhere other than a licensed restaurant or bar is not allowed and can lead to arrest.

## Included

- Transport from airport to boat - boat to airport
- Coordinator from Carlu Travel
- 8 days & 7 nights on a Liveabaord
- 3 meals a day & soft drinks & snacks
- 21 dives (depending on weather conditions)
- 12 liter tanks, weights & weight belts
- Nitrox (EANX)
- Diveguides
- Marine Park Fees
- Port Fees
- Fuel Fees
- Local Taxes
- Professional Pictures of the trip

## Not Included

- Flights
- Rental equipment
- Dive insurance (\*you can book with Carlu Travel)
- Travel insurance
- Tips for the crew
- Alcoholic drinks
- Anything not written in the included section

## Price

LOWER DECK

1.400€

MIDDLE/  
UPPER DECK

1.500€

JUNIOR SUIT

1.635€

EXECUTIVE SUIT

1.900€

The Trip has a capacity for 26 guests. Reservations are confirmed in order that the bookings are received. To book your reservation, please email us at [info@carludiveandtravel.com](mailto:info@carludiveandtravel.com).

Please include the following details.

- Full name
- Favorite cabin
- Date of birth
- Nationality
- Passport number
- Diver Medical Form
- Diving level, number of logged dive, date of last dive
- Equipment requirements with sizes (please include height, weight and shoe size)

Once your booking is received, there are two payment options for your invoice.

1. Full payment at time of booking.
2. 500 Euro deposit at time of booking (non refundable). Additional 25% due six months prior to departure. Your balance must be paid in full later than 90 days prior to departure.

\*Please fill out a divers medical form. For your safety, and that of others who may dive with you, answer all questions honestly.

Reserve your spot!



# ADD SOME DEPTH INTO YOUR LIFESTYLE



[www.carludiveandtravel.com](http://www.carludiveandtravel.com)



+56 9 5637 6727



[info@carludiveandtravel.com](mailto:info@carludiveandtravel.com)



@carlutravel

